

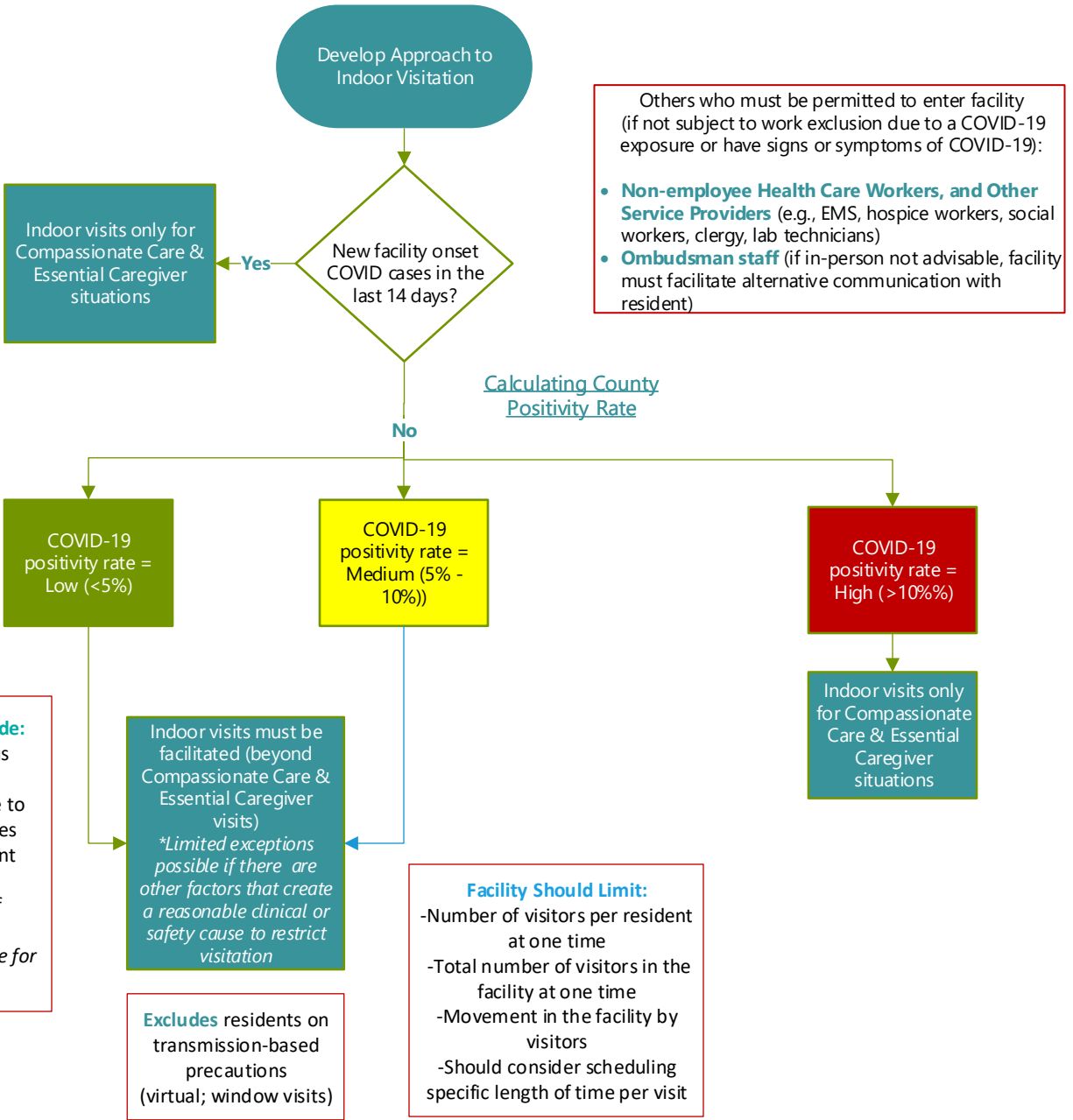
OSO-20-39-NH

Visitation Decision Guide

Nursing Home & Housing with Services/Assisted Living

[MDH HWS/AL Visitation Guidance](#)
[MDH NH Visitation Guidance](#)

In addition to family, Compassionate Care visits can be conducted by any individual that can meet resident's needs (e.g., clergy)



Others who must be permitted to enter facility (if not subject to work exclusion due to a COVID-19 exposure or have signs or symptoms of COVID-19):

- **Non-employee Health Care Workers, and Other Service Providers** (e.g., EMS, hospice workers, social workers, clergy, lab technicians)
- **Ombudsman staff** (if in-person not advisable, facility must facilitate alternative communication with resident)

***Other factors may include:**

- Resident's COVID status
- Visitor symptoms
- Lack of visitor adherence to Infection Control Practices
- Positivity rate of adjacent counties
- Lack of adequate staff
- Lack of PPE

See MDH HWS/AL guidance for other examples

Notes:

Facilities may not restrict visitation without a reasonable clinical or safety cause

Examples of cause include: county positivity rate, facility COVID-19 status, visitor symptoms, visitor not following infection control practices

Outdoor visitation is preferred whenever practicable and should be facilitated routinely aside from weather conditions, individual resident health status, or facility's outbreak status