



**TO: LeadingAge Minnesota Members**

**FROM: 2017 LeadingAge Minnesota Nominating Committee  
Jon Lundberg, Chair**

**RE: Call for Nominations to Board/Officer Positions**

The 2017 LeadingAge Minnesota Nominating Committee has been appointed and is seeking nominations for candidates for the 2018 Board of Directors. **Your voice is very important in the nominations process and, on behalf of the Committee, I invite you to submit a nomination by Monday, August 14, 2017.**

Please review this nomination information carefully as the number of open Director-at-Large/Officer positions varies from year to year. **For terms beginning in 2018, the majority of the incumbent Directors are eligible for re-election to a second, three-year term;** in fact, for 2018 there is only one elected position without an eligible incumbent. However, any nominations received will also be considered for Appointed Director positions open later in the year. A current LeadingAge Minnesota Board of Directors roster is included.

**The following slate of incumbents is eligible for nomination / re-nomination to their current positions:**

- Chair – (second, one-year term), **Mark Anderson**, President and Chief Executive Officer, **Knute Nelson**, Alexandria
- Chair-Elect – (second, one-year term), **Nancy Stratman**, Senior Services Director, **Cuyuna Regional Medical Center-Care Center**, Crosby
- Secretary-Treasurer – (second, one-year term), **Erin Hilligan**, Corporate Director of Skilled Services, **Ebenezer**, Minneapolis
- Director-at-Large – (first, three-year term), **Christine Bakke**, Chief Executive Officer and Administrator, **Madonna Living Community**, Rochester
- Director-at-Large – (first term, two years), **Donna Flaata**, District Director of Operations, **Brookdale Senior Living**, Plymouth
- Director-at-Large – (second, three-year term), **Paul Libbon**, Regional Director, **Ecumen**, Duluth

The Nominating Committee is charged with identifying the best candidates to lead the Association into the future, balancing skills, experience, geography, gender, organizational profile, age, ethnicity and other factors that will result in a strong and diverse board. **These candidates will be presented as a slate and the members will vote on the slate, as recommended by the Committee at the LeadingAge Minnesota Annual Business Meeting scheduled Wednesday, September 20, at Madden's.** With your help, we can assure that the LeadingAge Minnesota leadership is composed of those

individuals who will advance our mission to "*Enhance the Experience of Aging in Minnesota.*" We are happy to respond to any questions you or candidates may have regarding the nomination process.

Send completed [nomination forms](#) to the attention of Nancy Garrett at LeadingAge Minnesota. Nominations may be sent by mail or email. ***Thank you for your support and assistance in this important work!***

**2017 LeadingAge Minnesota Nominating Committee**

***Jon Lundberg, Chair***

President  
Ebenezer, Minneapolis

***Jim Bettendorf***

President & CEO  
Vista Prairie Communities, Hopkins

***Christy Brinkman***

Senior Administrative Leader  
Essentia Health Oak Crossing, Detroit Lakes

***Melissa Kirchhoff***

Campus Administrator  
McKenna Crossing, Prior Lake

***Michael Stordahl***

Administrator  
Clara City Care Center, Clara City

***Emily Straw***

Administrator  
LifeCare Roseau Manor, Roseau



## SPECIFIC CRITERIA FOR NOMINATIONS

The LeadingAge Minnesota Nominating Committee must ensure that it brings forward the best slate possible for leadership in our Association. We encourage you to submit candidates you know to have the leadership talents that can advance LeadingAge Minnesota's mission. Please use the criteria below as a guide. Candidates do not need to meet all the criteria, but we hope to offer a slate of directors who, together, bring strengths in all of these important areas:

- I. **Candidates *must* be an administrative officer or a member of a governing body of a Voting Member.**
- II. **Candidates should have demonstrated they value LeadingAge Minnesota through their support of and participation in:**
  - **Advancement of public policy.** Examples could include:
    1. National or state commissions, task forces
    2. Association advocacy including Cabinet and/or Public Policy Steering Committee participation
    3. Testimony, letters, visits and other direct activities to advocate for LeadingAge Minnesota's policy agenda
    4. LeadingAge Minnesota PAC leadership and participation
  - **Participation in state and national education programs** that advance LeadingAge Minnesota's mission. Examples might include:
    1. Speaker or faculty at workshops

2. Affiliations with colleges, universities
3. Participation in internship or mentorship programs
4. Participation in state and LeadingAge national conferences
5. Participation in the Leadership Academy as coach, speaker or fellow

■ **Participation in service and leadership.** Examples might include:

1. Committees and cabinets
2. District leadership

III. **Candidates who can help advance the development of membership** – provider and affiliate members – in terms of numbers and diversity through:

■ **Contacts to strengthen important strategic relationships for LeadingAge Minnesota, such as:**

1. Nonprofit organizations or sectors serving the elderly
2. Faith-based organizations
3. Academic institutions
4. Foundations
5. Consumer groups
6. Advocacy organizations
7. Professional groups
8. Business
9. Government

■ **Demonstrated leadership in facilitating member growth in LeadingAge Minnesota, such as:**

1. Effective member recruitment
2. Cultivating prospects

IV. **Candidates who add diversity to the board** based on any one of a number of dimensions including but not limited to ethnicity, religion, experience, skills, geography, and type of organization such as home and community based services.

V. **Candidates with effective speaking skills and the ability to lead and persuade others.**

VI. **Candidates who have the potential to be chair of the LeadingAge Minnesota Board of Directors in the future,** reflecting the qualities inherent in that position.

VII. **Candidates who can commit to fully participate in all activities of the Board,** including, but not limited to, 4-5 in-person meetings (one meeting each year is a 2 ½ day retreat). Unless otherwise specified, each officer typically serves in their post for two years and Board members for up to two, three-year terms.

# LeadingAge™ Minnesota

## BOARDROOM

### GOVERNANCE STRUCTURE

The LeadingAge Minnesota Board is composed of members who provide sound leadership and equitable representation to the membership as a whole and, collectively, represent a diversity of perspectives reflective of the LeadingAge Minnesota membership, as well as members and non-members who have specialized expertise to enhance the Board's diversity and marketplace perspective.

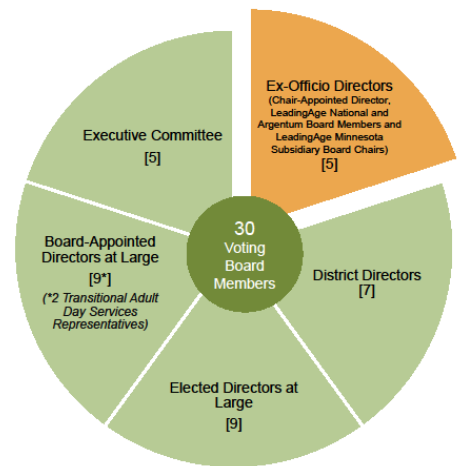
The LeadingAge Minnesota Board of Directors is composed of:

- Five Officers – Chair, Chair-Elect, Immediate Past Chair, Secretary/Treasurer and the President/CEO
- Seven District Directors elected by their respective districts
- Up to eleven Elected Directors-at-Large elected by the Voting Members
- Up to eleven Appointed Directors-at-Large appointed by the Board
- Non-Voting Directors
  - Chair-Appointed Director
  - National Affiliate Board Members
  - LeadingAge Minnesota Subsidiary Board Chairs

2017 LeadingAge  
Minnesota Board  
of Directors

**Invited Guests:**

- LeadingAge National Minnesota Public Policy Congress Delegates
- LTC Imperative Steering Committee Members (if not on Board)
- Minnesota Association of Healthcare Volunteers (formerly known as HCAM) Liaison
- MN-DONA Liaison



### PRINCIPAL ACCOUNTABILITIES

- Deliberate and establish LeadingAge Minnesota's policies including long-term strategic plans and annual priorities.
- Review, formulate and adopt funding strategies; monitor short and long-term financial and program performance.
- Hire, monitor, appraise, advise, support, reward and, if deemed necessary and desirable, terminate LeadingAge Minnesota's chief staff officer/President.
- Evaluate LeadingAge Minnesota Board of Directors' performance and act to ensure leadership development and Board actions which advance and reflect LeadingAge Minnesota's mission, values and goals.

### MAJOR LEADINGAGE MINNESOTA ANNUAL ACTIVITIES

- Based on an assessment of the changing environment, review and modify LeadingAge Minnesota's long-term strategic plan including multi-year strategic legislative priorities. Monitor program implementation and measure progress. Establish and modify LeadingAge Minnesota's positions as recommended by the committees and/or Board-established work groups. Review and approve annual priorities.
- Review and adopt an annual budget and recommend to the membership any dues increase needed to achieve annual objectives. (Accomplish via the Finance and Audit Committee).
- Elect LeadingAge Minnesota Appointed Directors at Large, Nominating Committee, LeadingAge Minnesota Solutions Board members and officers, and LeadingAge Minnesota Foundation Board members.

## MAJOR LEADINGAGE MINNESOTA ANNUAL ACTIVITIES (cont'd)

- Periodically review the performance and organizational alignment of LeadingAge Minnesota Solutions and Value First.
- Provide input to the annual performance review of the President/chief staff officer (as performed by the Executive Committee) and establish his/her compensation and benefits based on recommendation of the Executive Committee.
- Assess membership satisfaction with LeadingAge Minnesota's performance.

## BOARD MEMBER CONDUCT

- Attend LeadingAge Minnesota Board meetings regularly (two unexcused absences per year). The LeadingAge Minnesota Board of Directors meets 4-6 times per year, including a 2-1/2 day overnight retreat in the summer and a 1-1/2 day meeting in the fall. All other meetings are 4-5 hour day meetings typically held in the metro area. **2018 Meeting Dates:**
  - Friday, January 19, 9:30 am – 2:00 pm
  - Tuesday, February 6, 1:00 – 6:30 pm (LeadingAge Minnesota Board and Opinion Leaders Gathering)
  - Friday, April 13, 9:30 am – 2:00 pm
  - Wednesday-Friday, June 20-22 (Annual 2-1/2 Day Board Retreat), Arrowwood Resort, Alexandria
  - Wednesday-Thursday, November 7-8 (1-1/2 Day Meeting held in metro area)
- Study Board agenda material in advance and arrive prepared for discussion.
- Participate on and/or chair LeadingAge Minnesota committees and work groups.
- Serve as a LeadingAge Minnesota ambassador / spokesperson for LeadingAge Minnesota's positions and Board actions. Represent the Board at Association functions
- Contribute actively to Board decision-making.
- Provide candid, constructive criticism in the appropriate forum.
- Support Board decisions to members and other publics.
- Maintain confidentiality of designated information.
- Maintain a personal commitment to the mission, values, and goals of LeadingAge Minnesota.

## BOARD MEMBER CHARACTERISTICS

- Passion for older adult services
- Worthy of trust
- Thought and opinion leader
- Ambassador to peers and LeadingAge Minnesota stakeholders
- Consensus builder
- Attentive listener; articulate and forthright communicator
- Innovative, risk-taking, strategic in focus
- Ability to think across broad organization for the greater good of the association and profession
- Commitment

## GOVERNANCE STYLE

- Consensus-based decision making, where possible.
- Differences of opinion encouraged, with open and respectful expression of same.
- Majority rules where necessary; all Board members pledge to be supportive of a final Board action.
- Board establishes policies; chief executive officer implements policy.
- Fellowship and humor are important to what we do.







## 2017 LeadingAge Minnesota Board of Directors

### OFFICERS:

---

**MARK R. ANDERSON, CHAIR**

President and Chief Executive Officer  
Knute Nelson  
420 12th Avenue East  
Alexandria, MN 56308-2612  
(320) 763-1147 (D.D.)  
(320) 763-7548 (FAX)  
mark.anderson@knutenelson.org

**JON LUNDBERG, IMMEDIATE PAST CHAIR**

President, Ebenezer/President of Fairview Senior Services  
2722 Park Avenue  
Minneapolis, MN 55407-1009  
(612) 874-3460 (D.D.)  
(612) 874-3465 (FAX)  
jlundbe3@fairview.org

**NANCY STRATMAN, CHAIR-ELECT**

Senior Services Director  
Cuyuna Regional Medical Center-Care Center  
320 East Main Street  
Crosby, MN 56441-1645  
(218) 546-2306 (D.D.)  
(218) 546-2383 (FAX)  
nancy.stratman@cuyunamed.org

**ERIN HILLIGAN, SECRETARY-TREASURER**

Corporate Director of Skilled Services  
Ebenezer  
2722 Park Avenue  
Minneapolis, MN 55407-1009  
(612) 874-3477  
(612) 874-3465 (FAX)  
ehillig1@fairview.org

**GAYLE M. KVENVOLD, PRESIDENT & CEO**

LeadingAge Minnesota  
2550 University Ave. W., Suite 350S  
Saint Paul, MN 55114-1900  
(651) 603-3500  
(651) 645-0002 (FAX)  
gkvenvold@leadingagemn.org

### DISTRICT DIRECTORS:

---

**MICHELE HALVORSON - DISTRICT A**

Administrator  
Thief River Care Center  
2001 Eastwood Drive  
Thief River Falls, MN 56701  
(218) 683-8101  
(218) 683-8130 (FAX)  
mhalvorson@trcc.sfhs.org

**CHERI HIGH – DISTRICT B**

Administrator/CEO  
St. Michael's Health and Rehabilitation Center  
1201 8th Street South  
Virginia, MN 55792  
(218) 748-7801  
(218) 735-3128 (FAX)  
cheri.high@bhshealth.org

**NATHAN D. JOHNSON – DISTRICT C**

Chief Executive Officer  
PioneerCare  
1131 Mabelle Ave S  
Fergus Falls, MN 56537-3518  
(218) 739-7700  
(218) 739-7707 (FAX)  
nathanj@pioneer-care.org

**LINDSEY SAND - DISTRICT D**

Administrator  
Assumption Community  
715 North First Street  
Cold Spring, MN 56320-1401  
(320) 348-2320 (D.D.)  
(320) 685-7044 (FAX)  
lindseys@assumptionhome.com

**PAMELA ADAM - DISTRICT E**

Executive Director  
Rice Care Center  
1801 SW Willmar Avenue  
Willmar, MN 56201-2898  
(320) 214-2700  
(320) 214-2765 (FAX)  
pamela.adam@rice.willmar.mn.us

**DISTRICT DIRECTORS (Cont'd):**

---

**CHERYL GUSTASON - DISTRICT F**  
Administrator  
Field Crest Care Center & Assisted Living  
318 Second Street NE  
Hayfield, MN 55940-8857  
(507) 477-3266 Ext. 115  
(507) 477-3268 (FAX)  
cherylg@fieldcrestcare.com

**MELISSA K. KIRCHHOFF - DISTRICT G**  
Campus Administrator  
McKenna Crossing  
13810 Shepherds Path  
Prior Lake, MN 55379-2455  
(952) 230-3300  
(952) 230-3301 (FAX)  
mkirchhoff@preshomes.org

**ELECTED DIRECTORS-AT-LARGE:**

---

**CRAIG ABBOTT**  
President  
Health Dimensions Group  
4400 Baker Road - Suite 100  
Minneapolis, MN 55343  
(763) 225-8617  
(763) 537-9200 (FAX)  
craiga@hdgi1.com

**DAN JOHNSON**  
President and Chief Executive Officer  
Catholic Eldercare, Inc.  
817 Main Street NE  
Minneapolis, MN 55413-1931  
(612) 362-2425  
(612) 362-2421 (FAX)  
djohnson@catholiceldercare.org

**CHRISTINE BAKKE**  
Chief Executive Officer/Administrator  
Madonna Living Community  
4001 19th Avenue NW  
Rochester, MN 55901  
(507) 206-2203  
christine.bakke@bhshealth.org

**SHELLEY KENDRICK**  
COO/Senior Vice President of Operations  
Ecumen  
3530 Lexington Avenue North  
Shoreview, MN 55126-8002  
(651) 766-4337  
(651) 766-4310 (FAX)  
shelleykendrick@ecumen.org

**JIM BETTENDORF**  
Chief Executive Officer  
Vista Prairie Communities  
7900 Excelsior Blvd. - Suite 250  
Hopkins, MN 55343-3445  
(952) 837-0542  
(952) 837-0545 (FAX)  
jimbettendorf@vistaprairie.org

**PAUL LIBBON**  
Regional Director  
Ecumen  
4002 London Road  
Duluth, MN 55804  
(218) 525-1951  
(218) 625-7808 (FAX)  
paullibbon@ecumen.org

**ANGELA BROWN**  
Vice President of Human Resources  
Elim Care, Inc.  
7485 Office Ridge Circle  
Eden Prairie, MN 55344-3690  
(952) 259-4459  
(952) 259-4499 (FAX)  
abrown@elimcare.org

**MICHAEL STORDAHL**  
Administrator  
Clara City Care Center  
1012 Division Street North - P.O. Box 797  
Clara City, MN 56222-0797  
(320) 847-2221  
(320) 847-3553 (FAX)  
mstordahl@claracitycarecenter.org

**DONNA FLAATA**  
District Director of Operations  
Brookdale Senior Living  
15855 22nd Avenue N  
Plymouth, MN 55447-6452  
(615) 221-2289  
dflaata@brookdale.com



**APPOINTED DIRECTORS-AT-LARGE:**

---

**ROCKY CHAPIN**

President/CEO  
Benedictine Health System  
4000 Lexington Avenue North - Suite 201  
Shoreview, MN 55126  
(763) 689-6105 (D.D.)  
(763) 493-3935 (FAX)  
rocklon.chapin@bhshealth.org

**KRISTI KANE**

Director  
Arrowhead Area Agency on Aging - ARDC  
221 West First Street  
Duluth, MN 55802-1909  
(218) 722-5545  
(218) 529-7592 (FAX)  
kkane@ardc.org

**BARBARA KLICK**

CEO  
Sholom  
3620 Phillips Parkway  
Saint Louis Park, MN 55426-3700  
(952) 939-1661  
(952) 939-1662 (FAX)  
bklick@sholom.com

**DUANE LARSON**

Regional Director of Operations  
Presbyterian Homes and Services  
2845 Hamline Avenue North  
Roseville, MN 55113-7116  
(651) 631-6100  
(651) 631-6108 (FAX)  
dlarson@preshomes.org

**TRACI LARSON**

Vice President of Employee Experience  
Presbyterian Homes and Services  
2845 Hamline Avenue North  
Roseville, MN 55113-7116  
(651) 631-6420 (D.D.)  
(651) 631-6108 (FAX)  
tlarson@preshomes.org

**SCOTT R. RIDDLE**

CEO and President  
Walker Methodist  
3737 Bryant Avenue South  
Minneapolis, MN 55409-1019  
(612) 827-8380  
(612) 827-8458 (FAX)  
sriddle@walkermethodist.org

**GAIL SKOGLUND**

Director of Adult Day Services  
Augustana Care  
1015 Fourth Avenue North  
Minneapolis, MN 55405  
(612) 843-4940  
(612) 377-4373 (FAX)  
gaskoglu@augustanacare.org

**JOEL THEISEN**

President & CEO  
Lifesprk  
4570 West 77th Street - Suite 350  
Edina, MN 55435  
(952) 345-8770  
jtheisen@lifesprk.com

**CHAIR-APPOINTED DIRECTOR (Non-Voting):**

---

**MATTHEW L. ANDERSON**

Senior Vice President and Chief Strategy Officer  
Minnesota Hospital Association  
2550 University Avenue West – Suite 350 South  
Saint Paul, MN 55114  
(651) 659-1429  
manderson@mnhospitals.org

**EX-OFFICIO/NON-VOTING DIRECTORS:**

---

**LEADINGAGE MN FOUNDATION BOARD CHAIR**

**BARB BLUMER**

Attorney  
Barb Blumer Law, P.A.  
4667 Parkridge Drive  
Eagan, MN 55123-2130  
(651) 454-7838  
(651) 454-8777 (FAX)  
barbblumer@comcast.net

**LEADINGAGE MN SOLUTIONS BOARD CHAIR**

**WAYNE OLSON**

Executive Vice President  
Volunteers Of America National Services  
7530 Market Place Drive  
Eden Prairie, MN 55344  
(952) 941-0305 (D.D.)  
(952) 941-0428 (FAX)  
wolson@voa.org

**ARGENTUM BOARD MEMBER**

**TODD NOVACZYK**

Chief Executive Officer  
New Perspective Senior Living  
Technology Park VI, Suite T  
7625 Golden Triangle Drive  
Eden Prairie, MN 55344-3731  
(952) 746-3630  
(952) 746-3635 (FAX)  
todd@npseniorliving.com

**LEADINGAGE BOARD CHAIR**

**KATHRYN ROBERTS**

President and Chief Executive Officer  
Ecumen  
3530 Lexington Avenue North  
Shoreview, MN 55126  
(651) 766-4313 (D.D.)  
(651) 766-4310 (FAX)  
kathrynroberts@ecumen.org

**INVITED GUESTS:**

---

**MINNESOTA ASSOCIATION OF HEALTH CARE VOLUNTEERS LIAISON**

**DIANE DAMEROW**

President, Minnesota Association of  
Healthcare Volunteers (formerly HCAM)  
Naeve Hospital Auxiliary  
905 Spicer Road  
Albert Lea, MN 56007  
(507) 373-1516  
ddamerow@charter.net

**MN-DONA LIAISON**

**JENNIFER PARKER**

Director Club Suites Transitional Therapy  
and Wellness  
Bethesda Health and Housing  
901 Willmar Avenue SE  
Willmar, MN 56201-4554  
(320) 235-3924  
(320) 231-3399 (FAX)  
jenny.parker@bethesdawillmar.com

**LEADINGAGE PUBLIC POLICY CONGRESS DELEGATES**

**BOB DAHL**

President and Chief Executive Officer  
Elim Care, Inc.  
7485 Office Ridge Circle  
Eden Prairie, MN 55344  
(952) 259-4456  
(952) 259-4499 (FAX)  
bdahl@elimcare.org

**DANIEL C. DIXON**

President and Chief Executive Officer  
Guardian Angels  
508 Freeport Avenue NW – Suite A  
Elk River, MN 55330  
(763) 241-4439 (D.D.)  
(763) 241-4443 (FAX)  
dandixon@ga-er.org

**JON RIEWER**

President and Chief Executive Officer  
Eventide Senior Living Communities  
2405 8th Street South, Suite A  
Moorhead, MN 56560-1405  
(218) 291-2201 (D.D.)  
(218) 477-3250 (FAX)  
jriewer@eventide.org



**A. Information About Candidate**

Name: \_\_\_\_\_

Current Position: \_\_\_\_\_

Organization: \_\_\_\_\_

Address: \_\_\_\_\_

Phone: \_\_\_\_\_ E-mail: \_\_\_\_\_

**B. I'm nominating this person for:** \_\_\_\_\_  
(Specify position)

**C. Candidate's prior service to/engagement in LeadingAge Minnesota** (see specific Criteria for Nominations)

**D. Candidate's unique qualifications for leadership in our field:**

**E. Has candidate been informed of this nomination and is candidate willing to serve?**

Yes  No

**F. Nominated by:**

Name: \_\_\_\_\_ Date: \_\_\_\_\_

Phone: \_\_\_\_\_ E-mail: \_\_\_\_\_

Please send this form by **Monday, August 14, 2017**, to:

LeadingAge Minnesota Nominating Committee | Attn: Nancy Garrett  
2550 University Avenue West, Suite 350S | St. Paul, MN 55114-1900  
Or via E-mail to: [ngarrett@leadingagemn.org](mailto:ngarrett@leadingagemn.org)