

Dates and Locations:

**Thursday,
August 26 – Grand Rapids**
Timberlake Lodge Hotel &
Event Center
144 SE 17th Street
Grand Rapids, MN 55744
218.326.2600

**Tuesday,
August 31 – Bloomington**
Minnesota Society of CPAs
1650 West 82nd Street
Suite 600
Bloomington, MN 55431
952.831.2707

**Thursday,
September 2 – St. Cloud**
St. Benedict's Senior Community
1810 Minnesota Boulevard SE
St. Cloud, MN 56304
320.252.0010

**Wednesday,
September 8 – Moorhead**
Eventide
405 South Seventh Street
Moorhead, MN 56560
218.233.7508

**Monday,
September 13 – Rochester**
Hampton Inn & Suites
Rochester-North
2870 59th Street NW
Rochester, MN 55901
507.289.6100

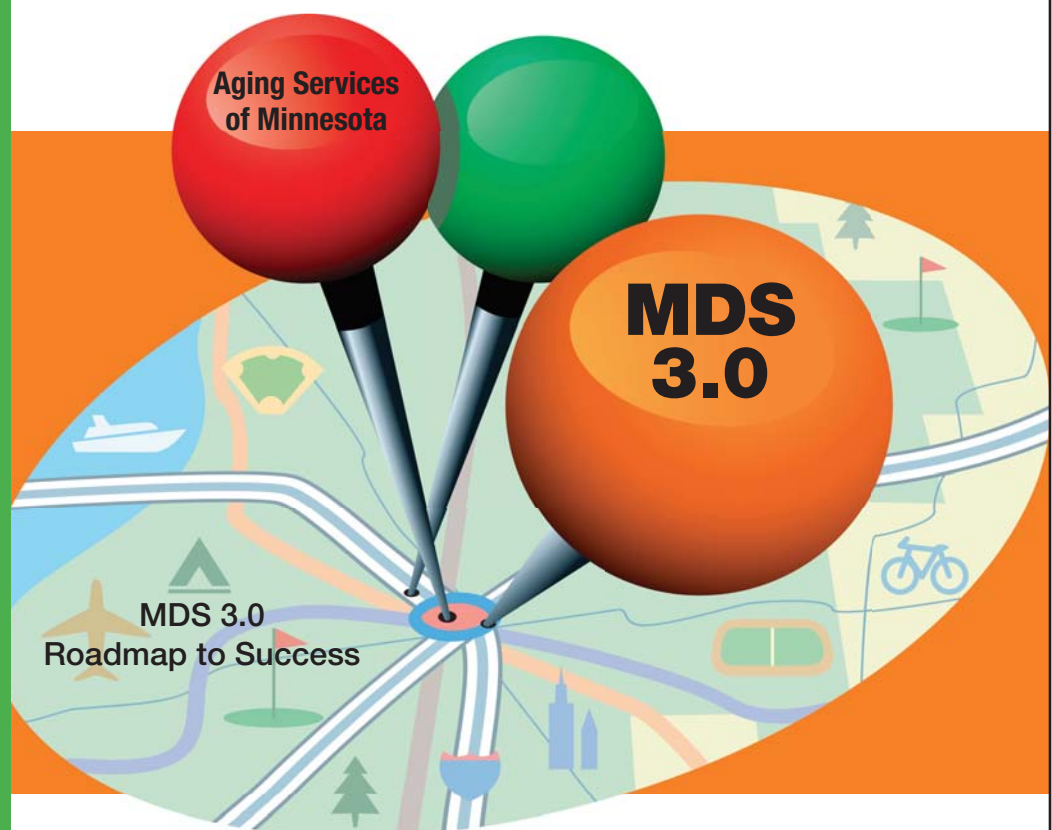
**Wednesday,
September 15 – Marshall**
Avera Marshall Regional Medical
Center
300 South Bruce Street
Marshall, MN 56258
507.532.9661

Planning Care Based on MDS 3.0 Assessments

*A one-day skill building
program specifically for the
interdisciplinary team*

Audience:

Case managers; Clinical Coordinators; Directors of Nursing;
Interested/designated interdisciplinary team members



Sponsored by:



Purpose

Understanding and scoring the MDS 3.0 correctly is only the beginning of the RAI process. Only when the interdisciplinary team (IDT) links the MDS information to development of care planning will the resident receive the care and services needed to achieve and maintain the highest possible well-being, and facilities can avoid any deficiencies.

This program will help your interdisciplinary team use assessments effectively as a basis for good clinical problem solving and decision making and to develop a sound care plan. Participants will learn the emphasis CMS has placed on the IDT to identify current evidence-based or expert-endorsed resources and standards of practice. This workshop is designed to build on the basic training provided by MDH to help your staff develop and sharpen the interdisciplinary team's skills in utilizing the "Care Area Assessment" (CAA) process of analyzing the care areas triggered, determining when to proceed to care planning and what to document.

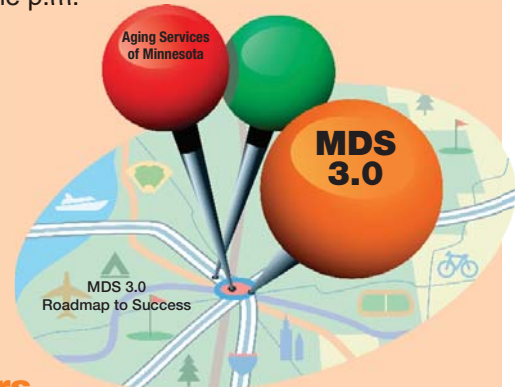
Learning Objectives

- Understand the relationship between the MDS 3.0, Care Area Assessment and Care Plan to better meet your residents' care needs.
- Identify six key documentation components for triggered Care Area Assessments.
- Discover resources for standards of practice and current evidence-based or expert-endorsed resources that support choice of treatment and/or intervention and so your practice is based on proven outcomes.
- Describe your role in incorporating the voice of the resident, family or resident representative into the RAI process.
- Learn how to best balance or respond to resident choice when services or treatments are declined.

Schedule

8 a.m.	Registration
8:30 a.m.	PROGRAM
Noon	Lunch (included)
1 p.m.	PROGRAM
4 p.m.	Adjourn

* This schedule includes 2 – 15 minute breaks – one a.m. and one p.m.



Presenters

JEAN M. BEAN, *Director of Clinical Services, Covenant Retirement Communities, Golden Valley.* Jean has 29 years of long-term care nursing experience and her responsibilities include resident care protocol development and implementation, coordinating initial and ongoing clinical health care software implementation and training, consultation related to skilled nursing survey readiness, monitoring plans of correction and MDS coordinator orientation. She is also responsible for policy and procedure development and corporate compliance for monitoring clinical practices and resident care outcomes.

ELIZABETH SETHER, *Nurse Consultant/Policy Analyst, Aging Services of Minnesota/Aging Services Group, St. Paul.* Liz has many years of experience working in long-term care as a director of nursing and as an assistant administrator, consultant, and trainer. Her academic background includes a degree in nursing, advanced studies in health services administration (patient administration and long-term care), credentials from the University of Minnesota and a master's degree in hospital administration. She is a licensed Minnesota nursing home administrator and a certified nurse administrator.

Both Ms. Sether and Ms. Bean attended the national CMS "Train the Trainer" session on the new MDS 3.0 in Baltimore, Md. in April 2010.

Continuing Education Credits

This program has been designed to meet the continuing education criteria of the Minnesota Board of Nursing (6.6 contact hours) and the Minnesota Board of Social Work (5.5 continuing education hours). Aging Services of Minnesota is an approved provider by the Minnesota Board of Social Work. Application has been made to the Minnesota Board of Examiners of Nursing Home Administrators for 5.5 clock hours. General certificates of attendance can be issued by request for any attendee who has participated in the program for CEUs earned. These certificates can be used as verification of attendance when an individual applies on his/her own for CEU approval to various professional organizations and other licensure boards.

Accommodations

Overnight accommodations for each workshop location are on your own. Hotel recommendations will be e-mailed with your program confirmation.

Registration Information

The program registration fee is designed to promote Interdisciplinary Team (IDT) attendance. The fee includes refreshment breaks, a light lunch and handout materials. MDS 3.0 manuals are extra. Registration is limited and on a first received basis. Registration cut-off date and cancellation notice – five (5) working days before the start of each workshop to receive a refund and all cancellations are subject to a \$25 processing fee. No call/no shows will be billed the full fee. Aging Services of Minnesota reserves the right to cancel this program.

Aging Services of Minnesota Members - \$125 for the first person. \$105 per person for each additional person.

Prospective Members - \$160 for the first person. \$130 per person for each additional person

To Send Registration Via FAX or E-Mail

Registrations may be faxed to **651.645.0002**. Include a P.O. number for follow up with payment to be received by Aging Services of Minnesota prior to the program. Aging Services of Minnesota members (only) may be invoiced.

Register online at www.agingservicesmn.org. You will receive an e-mail confirmation 2-3 working days with information on this workshop.

Questions about the program:

Heidi Simpson, hsimpson@agingservicesmn.org

Registration questions:

Kellie Carlson, kcarlson@agingservicesmn.org

Local calls: 651.645.4545

Toll free: 800.462.5368

MDS 3.0 Manual Available through Aging Services

The Long-Term Care Resident Assessment Instrument User's Manual Version 3.0 (H50363) includes two volumes – each with features that will make the transition to MDS 3.0 easier for your staff and provide them with a valuable ongoing resource.



Volume 1: Contains Chapters 1-6 and Appendices A-G in a 3-ring binder. This essential feature makes it simple to keep the manual current and up-to-date through frequent CMS updates. It also includes 20 tabs for quick referencing.

Volume 2: Contains Appendix H with all the MDS 3.0 forms as a convenient soft-bound companion manual. MED-PASS has wisely packaged the forms in a separate volume since the forms are seldom revised and mostly used for infrequent reference because most providers utilize their electronic MDS software for documenting.

Aging Services Member Price

Manual (Both Volumes 1 & 2): **\$23.50**

Prospective Member Price

Manual (Both Volumes 1 & 2): **\$35.00**

This basic manual retails for \$44 when purchased directly from MED-PASS. Aging Services has negotiated an almost 50% savings for our members and we are passing 100% of the savings on to you!

Plus Shipping and Handling

Shipping and handling will be added to your order based on quantity purchased. (Pay only \$2.50 for S&H by picking up your manual at one of the six locations for this conference.)

On July 15 the final content for the manual was released by CMS and is being incorporated into the manuals. Delivery is expected in early August. **Order now and receive your manual in time for this program.**

How to Order:

Contact Alecia Crumpler at 651.603.3528 or acrumpler@agingservicesmn.org.

One-Year Update Subscription

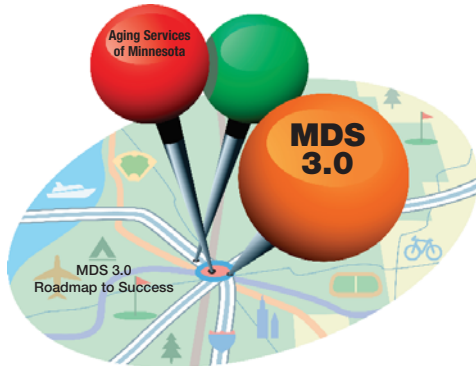
Available for purchase from MED-PASS when you buy the manual (volumes 1 & 2). The automatic updates include the replacement manual pages and an updated CD sent directly to your building.

One-Year Update Subscription Price: \$36

AGING SERVICES OF MINNESOTA

2550 University Avenue West
Suite 350 South
St. Paul, MN 55114-1900

PRSR
FIRST-CLASS MAIL
US POSTAGE PAID
MINNEAPOLIS, MN
PERMIT #29309



Planning Care Based on MDS 3.0 Assessments

8/26 - Grand Rapids • 8/31 - Bloomington

9/2 - St. Cloud • 9/8 - Moorhead

9/13 - Rochester • 9/15 - Marshall

REGISTRATION FORM

Planning Care Based on MDS 3.0 Assessments

NAME _____ TITLE _____

E-MAIL _____ (required)

☐ 8/26 - Grand Rapids ☐ 8/31 - Bloomington ☐ 9/2 - St. Cloud ☐ 9/8 - Moorhead ☐ 9/13 - Rochester ☐ 9/15 - Marshall

NAME _____ TITLE _____

E-MAIL _____ (required)

☐ 8/26 - Grand Rapids ☐ 8/31 - Bloomington ☐ 9/2 - St. Cloud ☐ 9/8 - Moorhead ☐ 9/13 - Rochester ☐ 9/15 - Marshall

NAME _____ TITLE _____

E-MAIL _____ (required)

☐ 8/26 - Grand Rapids ☐ 8/31 - Bloomington ☐ 9/2 - St. Cloud ☐ 9/8 - Moorhead ☐ 9/13 - Rochester ☐ 9/15 - Marshall

ORGANIZATION _____

ADDRESS _____

CITY _____ STATE _____ ZIP _____

PHONE () _____ FAX () _____

Method of payment: ☐ Payment enclosed ☐ Check here to be invoiced (Aging Services members only)

Credit card: ☐ VISA ☐ MasterCard ☐ AmEX

CARD # _____ EXP. DATE _____

Send registration form and fee (payable to):

AGING SERVICES OF MINNESOTA

2550 University Avenue West, Suite 350 South, St. Paul, MN 55114-1900, Attn: Accounting #8360

REGISTRATION INFORMATION AND FEES:

Aging Services of MN Members - \$125 for the first person. **\$105** per person for each additional person.

Prospective Members - \$160 for the first person. **\$130** per person for each additional person.

Register online at www.agingervicesmn.org. You will receive an e-mail confirmation 2-3 working days with information on this workshop.

How to register

Online: www.agingervicesmn.org – click on Events

Fax: 651.645.0002

Mail: Aging Services of Minnesota
2550 University Avenue West,
Suite 350 South, St. Paul, MN 55114-1900
Attn: Accounting #8360

Include a P.O. number or follow-up with payment to Aging Services prior to the program date. Aging Services of Minnesota members (only) may be invoiced.